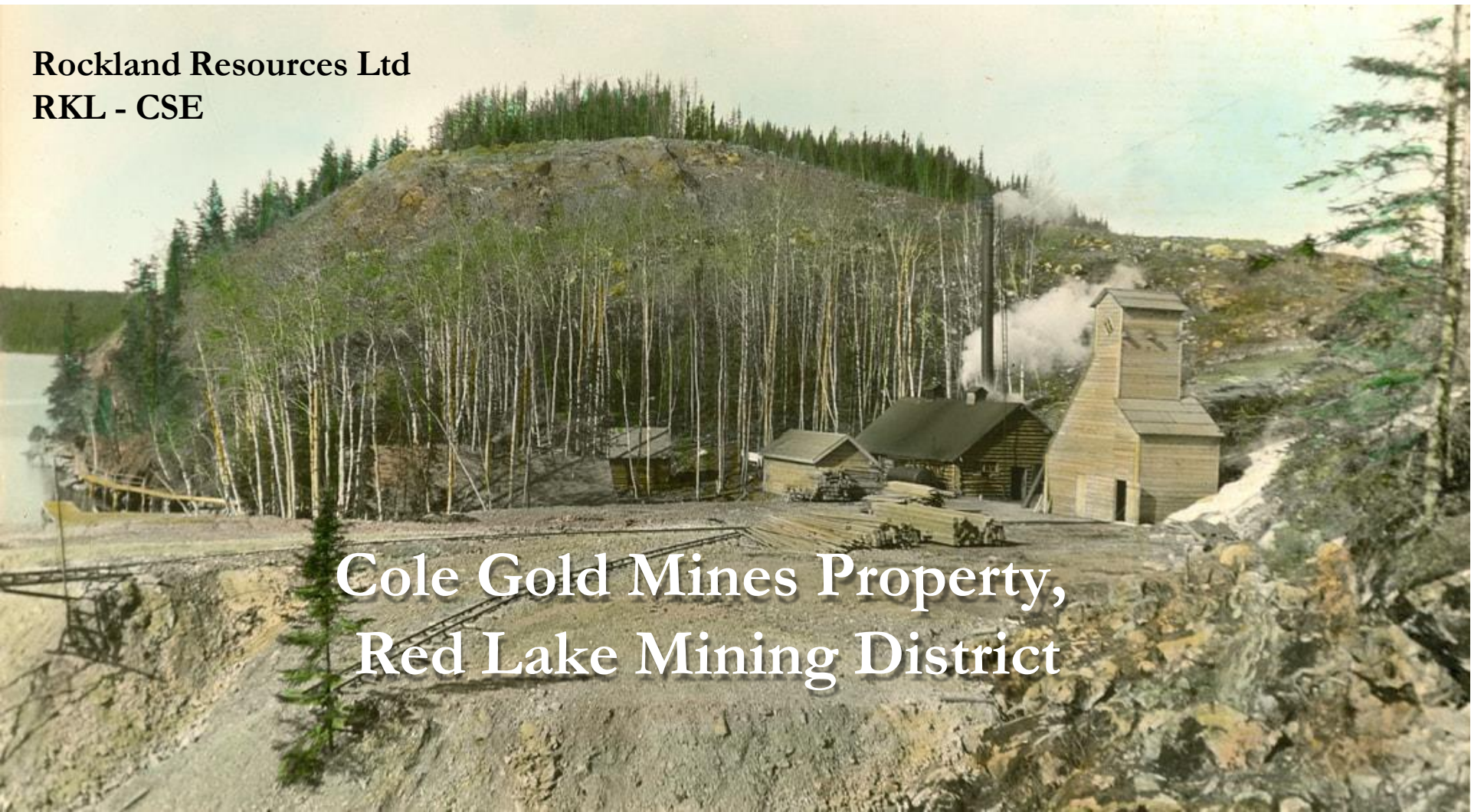


Rockland Resources Ltd
RKL - CSE



Cole Gold Mines Property, Red Lake Mining District

**Exploring for High-Grade Gold
In the Prolific Red Lake Mining Camp**

Family owned and worked since 1930. Until now

June 2024

DISCLOSURE & FORWARD LOOKING STATEMENTS

Certain statements in this presentation regarding estimates, forecasts or future events are “forward-looking statements”. These are related to, the risk and uncertainties that could cause actual results to differ from estimated results. Such statements are based on the opinions and estimates of management as of the date these statements are made, and they involve known and unknown risks, uncertainties and other factors which may cause the actual results, performance or achievements of the Company to be materially different from any other future results, performance or achievements expressed or implied by the forward-looking statements.

The Company undertakes no obligation to update forward-looking statements if circumstances or management’s estimates or opinions should change. Rockland Resources Ltd. has compiled the information from historical sources that are believed to be reliable, however, Rockland Resources Ltd. makes no warranty as to the accuracy and reliability of the information presented herein.

Cover Photo – Cole Gold Mine 1935, photo from Red Lake Museum

High Level Key Points

- Cole Gold Mines Property is located on the west side of the Red Lake district adjoining West Red Lake Gold Mines Ltd. (WRLG: TSXV)
- Family owned and developed dating back to the 1930's; Estate owned tenures lapsed in 2019
- Rockland is the first and only public company to own Cole
- 3 levels of underground development
- Historic maps, pictures and data continue to be located as Rockland's research digs deeper

- Cole Gold Mines Property is located on the west side of the Red Lake district adjoining West Red Lake Gold Mines Ltd. (WRLG: TSXV)
- Family owned and developed dating back to the 1930's; Estate owned tenures lapsed in 2019
- Rockland is the first and only public company to own Cole
- 3 levels of underground development
- Historic maps, pictures and data *continue to be located as* Rockland's research digs deeper

Exploring for High Grade Gold - Cole Gold Mines

Under Explored for 50 years!

- Cole Gold Mines Property is **located on the west side of the Red Lake** district - acquired after expiry of Cole Estate patents
- Property is **30 km west of the Cochenour, Campbell, Red Lake Mine Complex** on Pipestone Bay Deformation Zone
- Cole Gold Mines Ltd developed **exploration shaft to 162 metres** with underground development on 3 levels totalling 2134 m of lateral crosscutting and drifting
- Historical longitudinal section **resource estimate of 108,663 tonnes at 12.8 g/t Au** (non-NI43-101 compliant) estimated by Kerr Addison Mines in 1973
- **High grade gold intersections** up to 68.8 g/t over 0.46 metres in sulphide mineralized quartz veins in sheared quartz porphyry drilled by Kerr Addison Mines
- **New high-grade surface showings and drill ready targets** on property with limited exploration since 1938
- **Property accessible by boat from Red Lake**

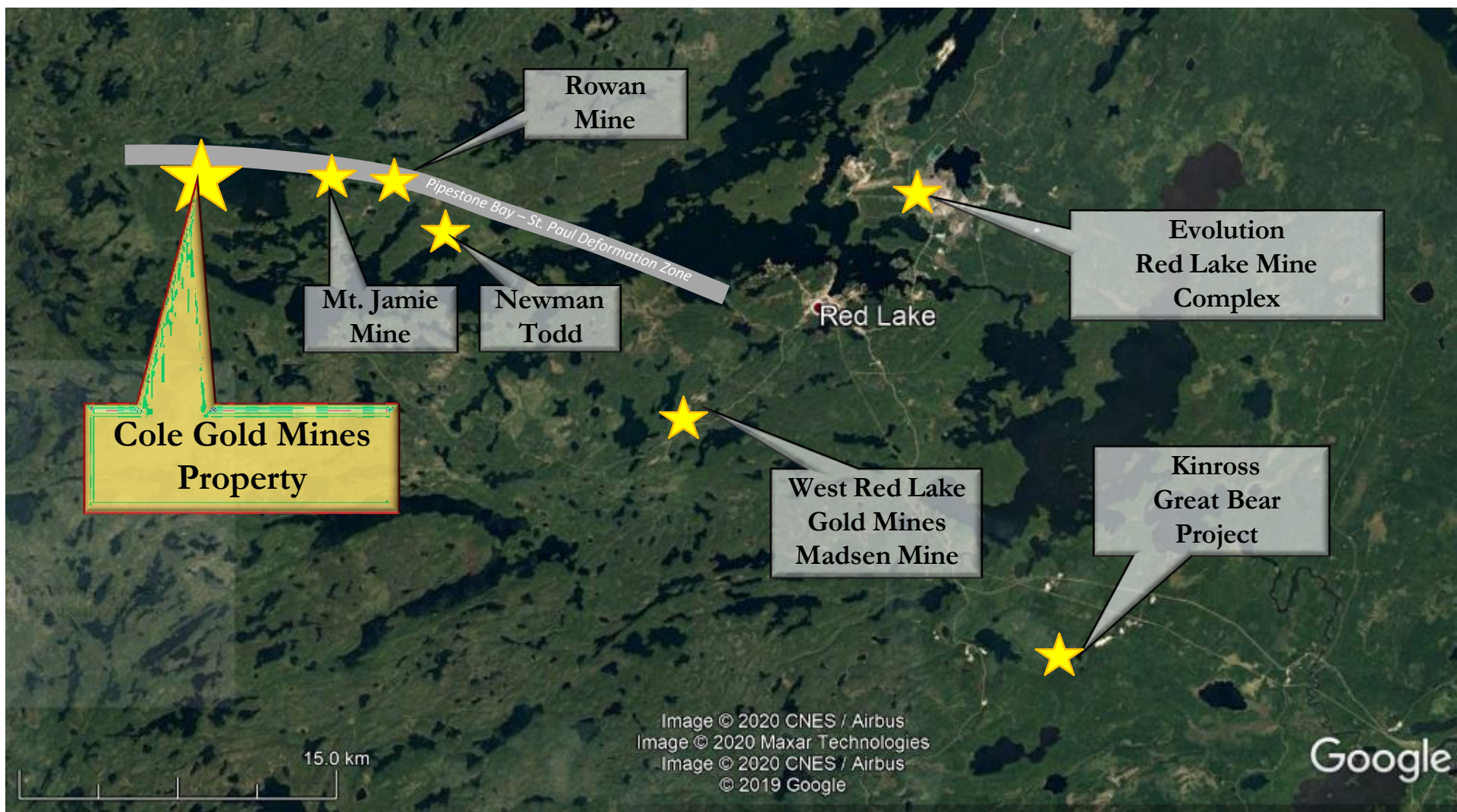


*John Cole II, Original Owner
and Developer, 1937*

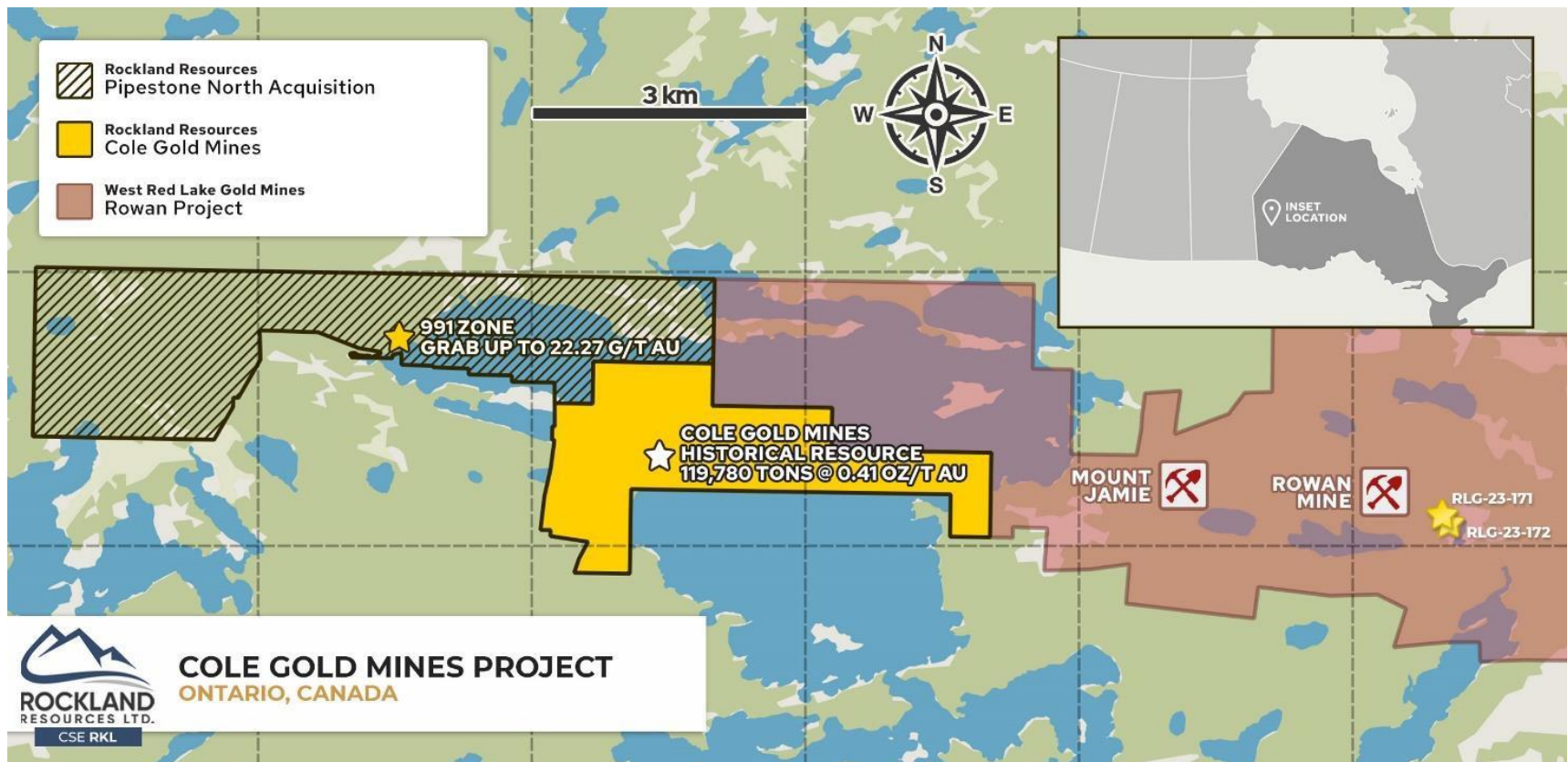
Exploring for High-Grade Gold - Cole Gold Mines Property

Located in Prolific Red Lake Mining Camp, Ontario

30 Million Ounces Au Produced from 28 Mines

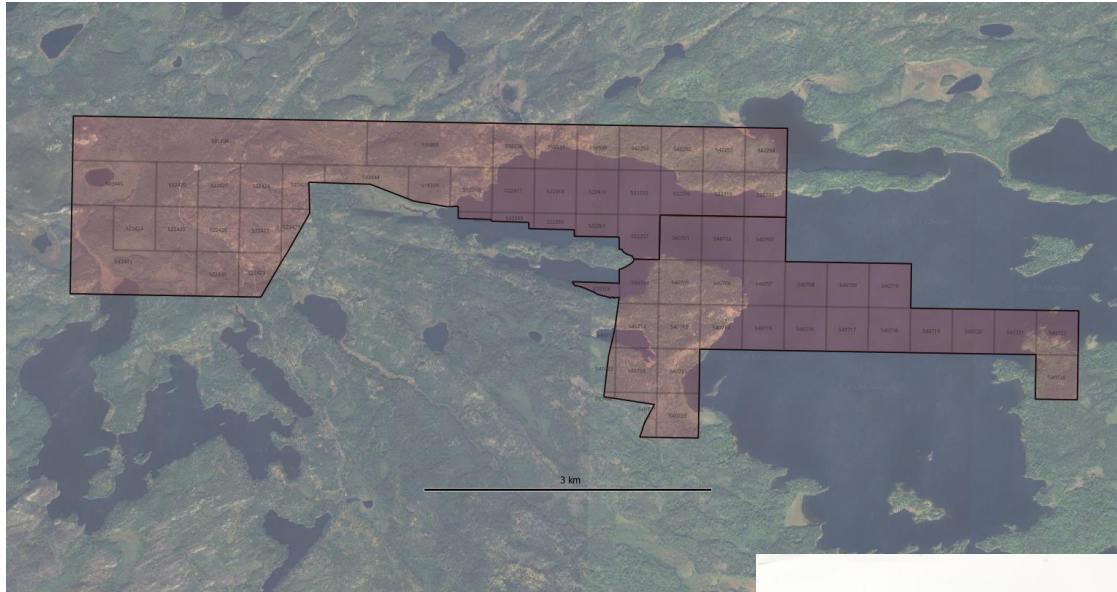


Cole Gold Mines Property Map



Exploring for High-Grade Gold - Cole Gold Mines

Red Lake Property with minimal exploration for 50 years

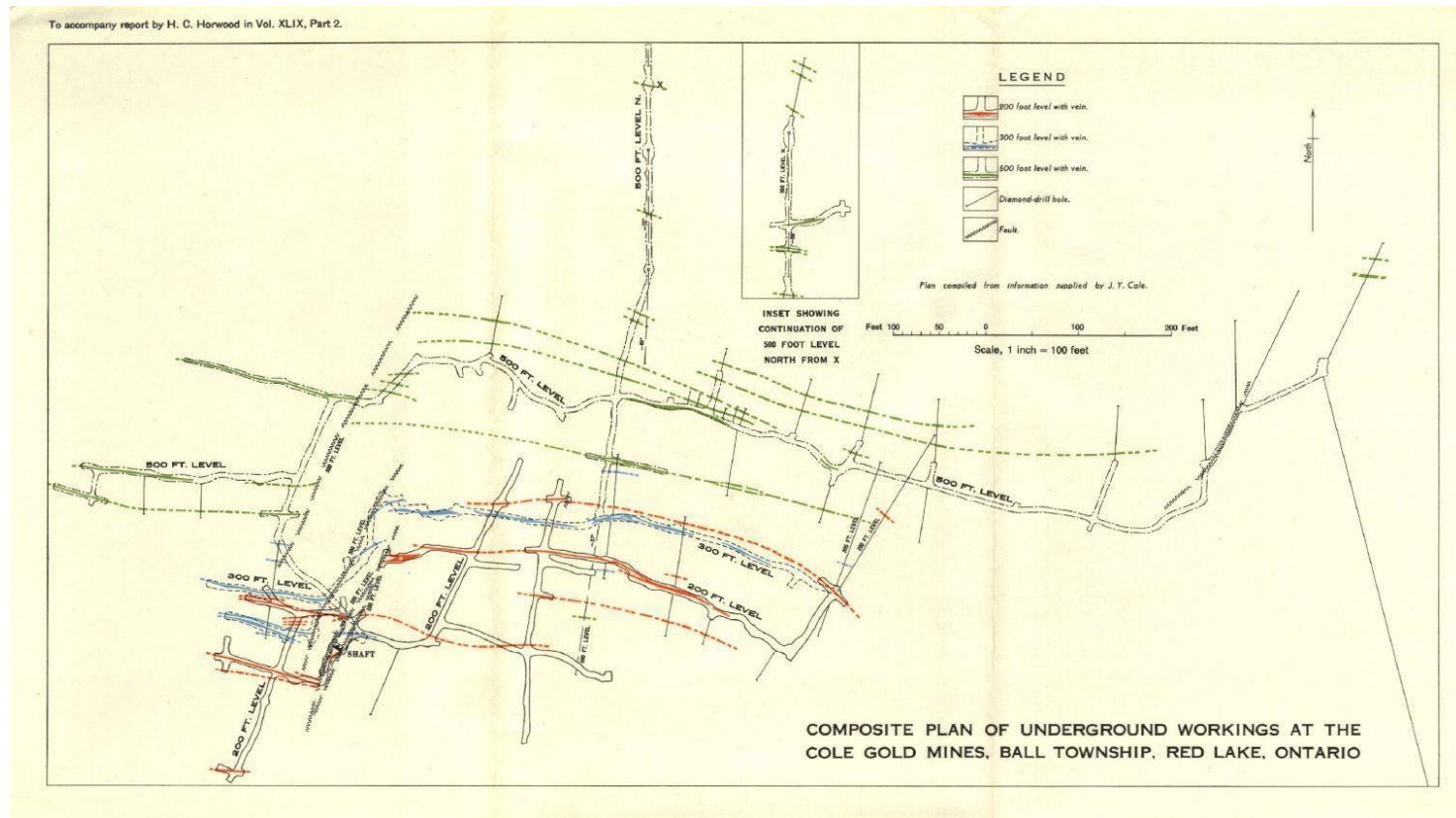


- Cole Gold Mines Property consists of 80 mining claims (1438 ha) located on Pipestone Bay, Red Lake
- Acquired in 2020 after expiry of Cole Estate patents

- Cole Gold Mines, Limited developed the property from 1933 - 1938
- Since 1938, the Property has had limited surface diamond drilling in 1973 (2108m) and 2021 (996m)



Exploring for High-Grade Gold - Cole Gold Mines Property



- Exploration in 1930's included sinking a shaft to 162 metres and 2134 m of lateral underground development on 200, 300, and 500 level
- U/G development defined multiple high-grade north-dipping quartz veins
- Kerr Addison Mines (1973) completed longitudinal section resource estimate of 108,663 tonnes at 12.8 g/t Au, this is an historical estimate that has not been validated and is **not** NI43-101 compliant

Exploring for High-Grade Gold - Cole Gold Mines Property

- Cole Gold Mines Property is comprised of felsic metavolcanic rocks and quartz porphyry intruded by gabbro sills
- Shear zones in the porphyry and felsic rocks strike east-west, dip steeply north and contain gold mineralized quartz veins.
- High-grade gold is associated with sphalerite-chalcopyrite-scheelite bearing quartz veins
- Mineralization is reported to depths of 200 meters over widths up to 2.5 meters with values up to 68.8 g/t Au over 0.46 m (Kerr Addison, 1973)

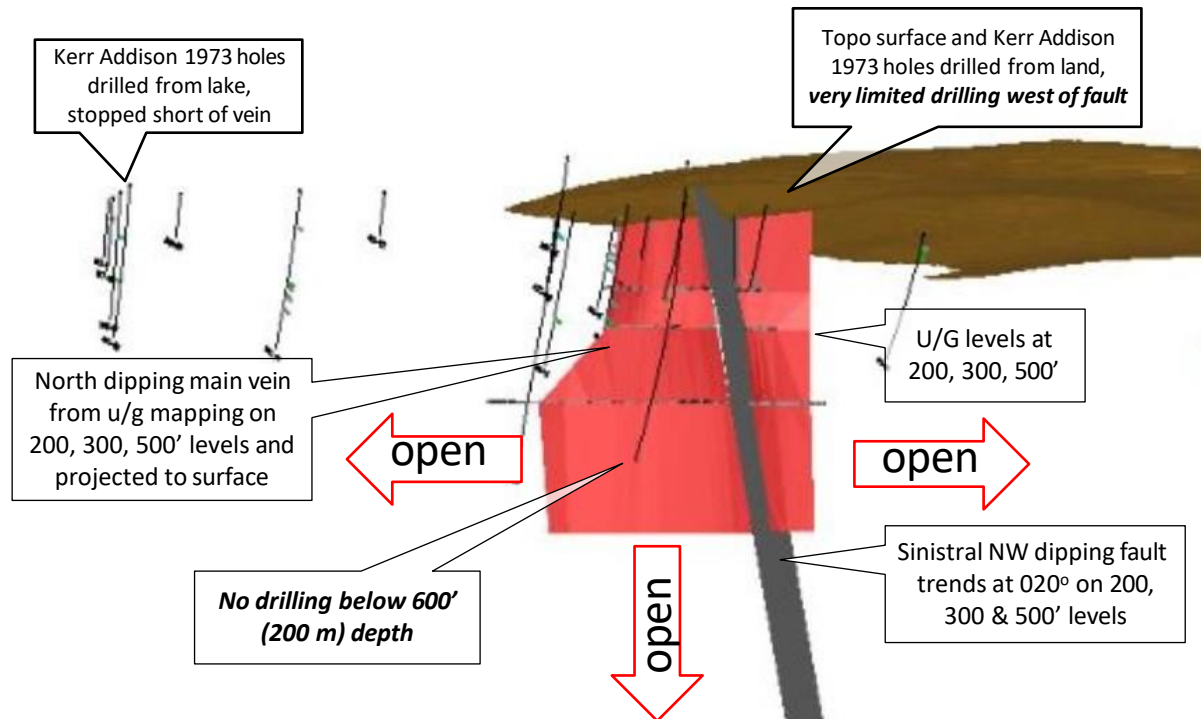


Sheared porphyry with sulphide mineralized quartz veins from Cole mine dump



Fractured quartz porphyry with quartz veinlets, Cole Gold Property

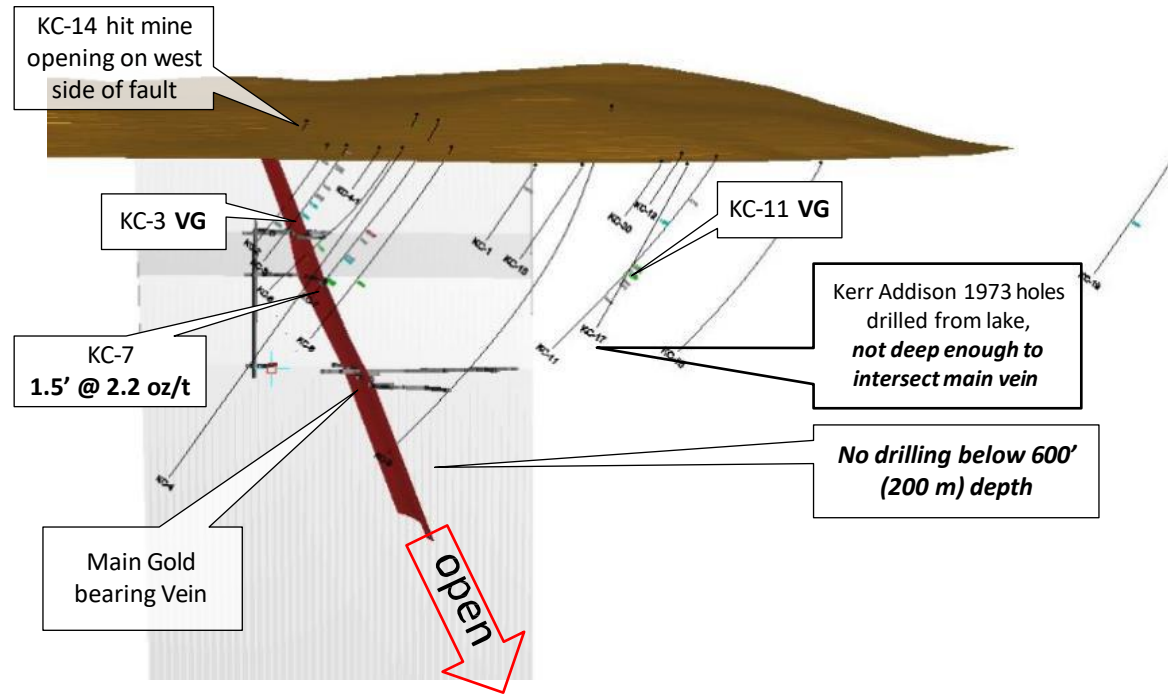
Exploring for High-Grade Gold – Cole 3D Compilation



- Cole longitudinal section looking approximately south, Kerr Addison holes drilled to south, vein dips north at approx. 70°
- Exploration in 1930's included sinking a shaft to 162 metres and underground development on 3 levels
- Fully open below 200 m depth, very limited drilling west of fault and shaft

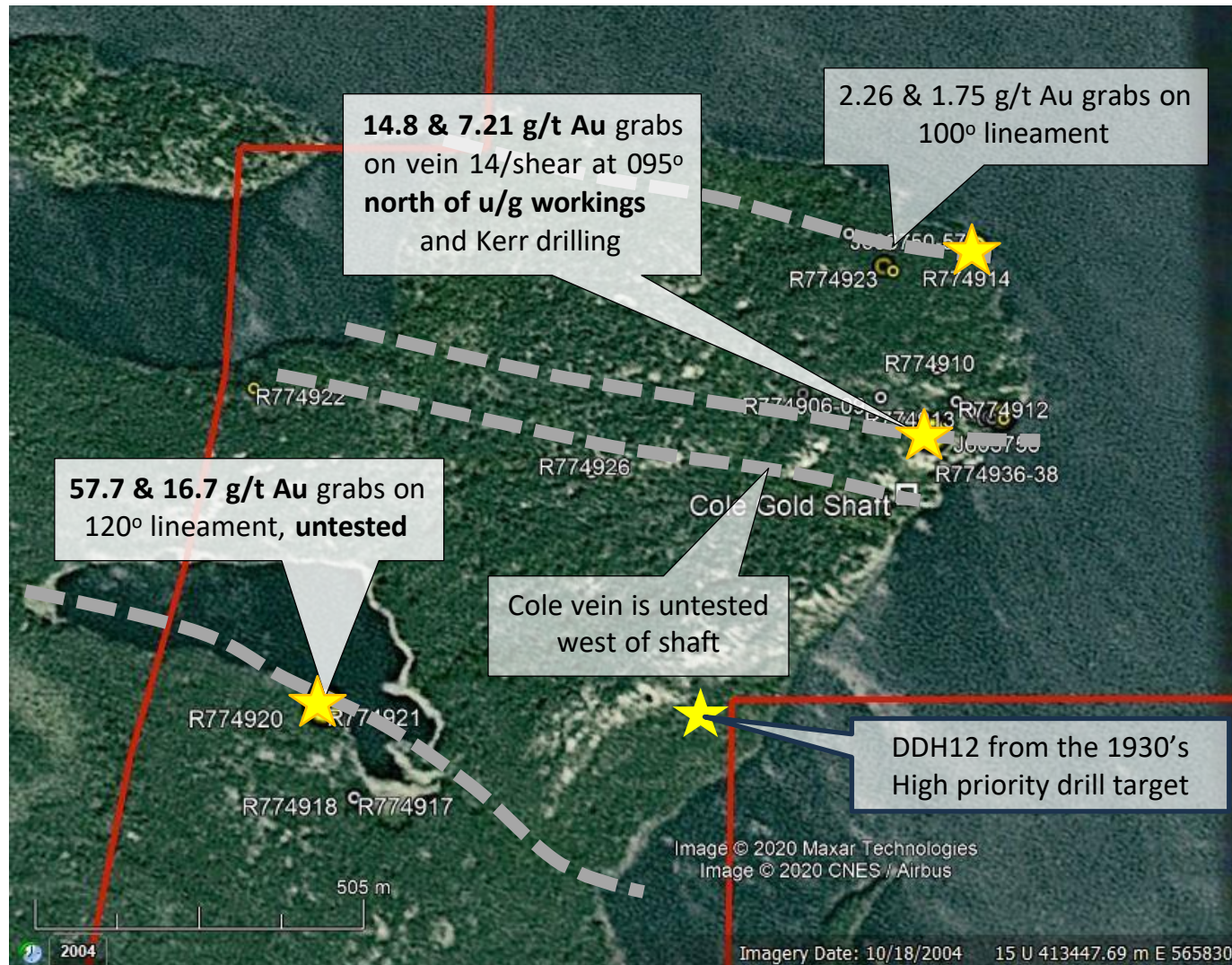
Exploring for High-Grade Gold – Cole 3D Compilation

Cross Section view looking West



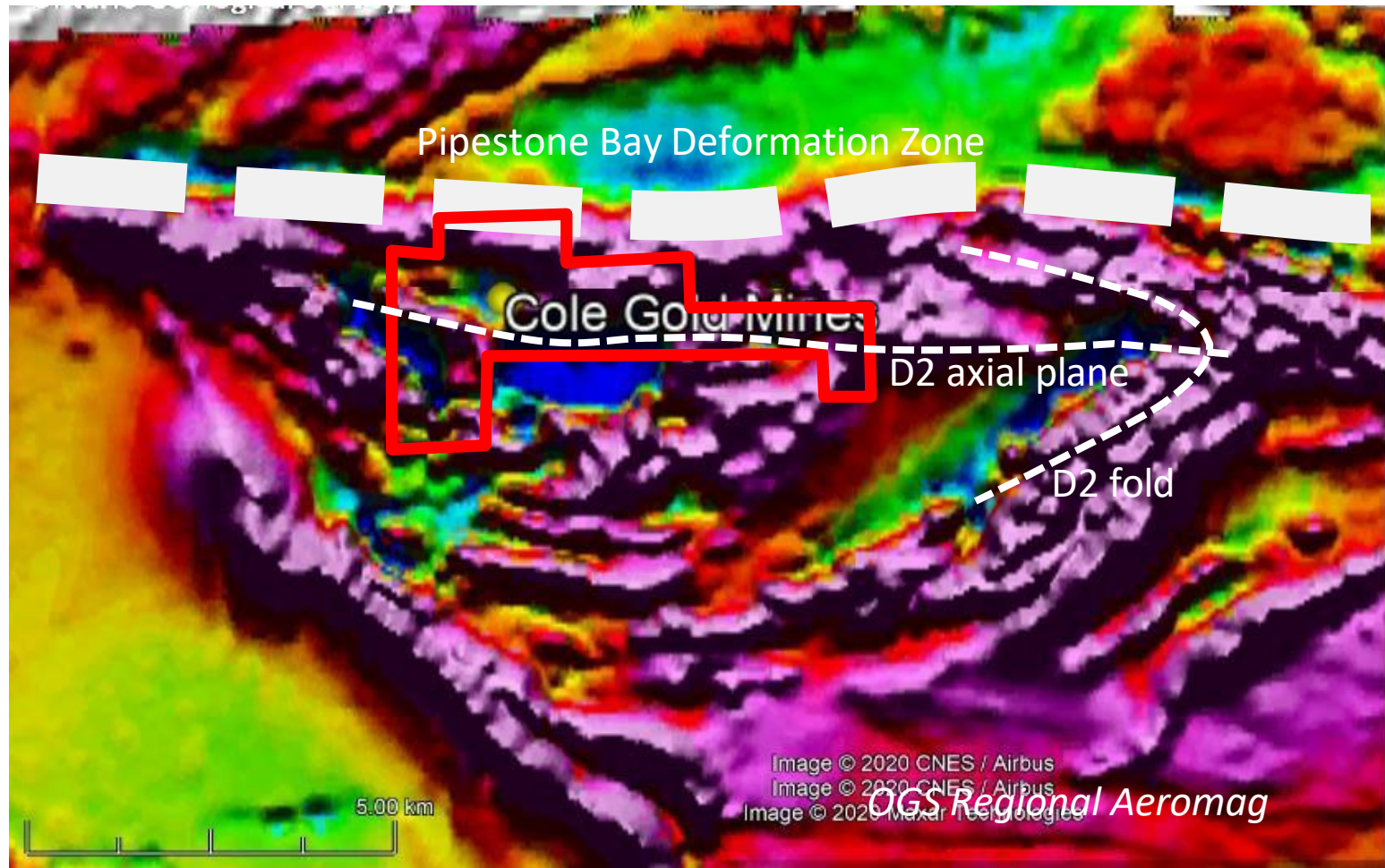
- 1973 Kerr Addison holes drilled to south, main vein dips north at approx. 70°
- Drilling was AQ core – *too small for sampling coarse nuggety gold!*
- KC-7 intersected 0.46 m @ 68.8 g/t Au
- Most Kerr Addison holes stopped well short of main vein system
- Zone fully open below 200 m depth

Exploring for High-Grade Gold – New high-grade targets from surface prospecting



- Multiple drill ready targets with high grade showings
- Main vein is open on strike and below 200 m depth

Cole Gold Mines Property – Exploration Model



High-grade quartz vein hosted gold mineralization associated with:

- Regional deformation zones with known gold mineralization
- D2 fold axial planar structures and quartz veining localized near lithological contacts
- Potassic (biotite/sericite), silica, sulphide alteration

Cole Gold Mines Property – Exploration Program



Program	Units	Budget
Phase 1 – Spring 2024, in progress		
Geological mapping, prospecting, assays, travel		\$25,000
Surface stripping, channel sampling		\$30,000
Subtotal – Phase 1		\$55,000
Phase 2 – Fall 2024		
Drilling Program	6 holes – 1,200 m	\$360,000
Structural geology, data compilation, NI43-101 technical report		\$60,000
Subtotal – Phase 2		\$420,000
Total		\$475,000



SHARES OUTSTANDING

73,897,787

WARRANTS

22,475,000

OPTIONS

6,650,000

WARRANTS

EXPIRY	AMOUNT	PRICE
2025-04-27	5,220,000	\$0.20
2024-12-08	15,005,000	\$0.10
2026-03-21	2,250,000	\$0.05

OPTIONS

EXPIRY	AMOUNT	PRICE
2027-03-14	2,000,000	\$0.05
2026-10-17	200,000	\$0.07
2026-08-10	2,600,000	\$0.07
2025-08-4	650,000	\$0.20
2025-10-4	1,200,000	\$0.12

**MIKE ENGLAND****CEO & DIRECTOR**

Mr. England has been involved in the public markets since 1983 and has been directly responsible for raising in excess of \$80-million for mineral exploration and acquisitions.

LINDSAY BOTTOMER P.GEO**DIRECTOR**

Lindsay has over 45 years of experience in international exploration and development, most recently focused on epithermal gold and porphyry copper-gold exploration.

ROBERT WEICKER P.GEO**CHIEF GEOLOGIST & ADVISOR**

Mr. Weicker is a professional geologist with more than thirty years of experience in all aspects of the minerals exploration and mining industry.

CHARLES DESJARDINS**DIRECTOR**

Mr. Desjardins brings more than 30 years of public company experience in the areas of finance and public company management.

TOM MCCANDLESS**DIRECTOR**

Mr. McCandles has over 40 years of experience in mineral discovery and development over a board range of commodities including lithium, uranium, gold, base metals, PGE, and geothermal energy.

LEON HO CPA**CFO**

Mr. Ho is a chartered professional accountant working at Cross Davis & Company LLP, providing services to publicly listed entities primarily in the mining sector.

JAY SUJIR**ADVISOR**

Jay has been a mining and securities lawyer for over 30 years. He is currently a partner at the firm Farris LLP and is a director of several publicly traded companies.

GARRY CLARK**ADVISOR**

Garry Clark is the Executive Director of the Ontario Prospectors Association (OPA) and has been a Director, Vice President or President of OPA since its formation.

MATTHEW LONG P.GEO**GEOLOGICAL CONSULTANT**

Mr. Long is a professional geologist with over 25 years of gold exploration and mining experience predominantly in the Red Lake District that includes underground production at both the Madsen and Campbell Mines.



CSE **RKL**



CSE: RKL

CORPORATE OFFICE

Rockland Resources Ltd.

1240-789 W Pender St.
Vancouver, BC, V6C 1H2

CONTACT US

☎ 1-604-683-3995

☎ 1-888-945-4770

✉ info@rocklandresources.com

🌐 rocklandresources.com

[f](#) [t](#) [in](#) [o](#) @ROCKLANDRKL

